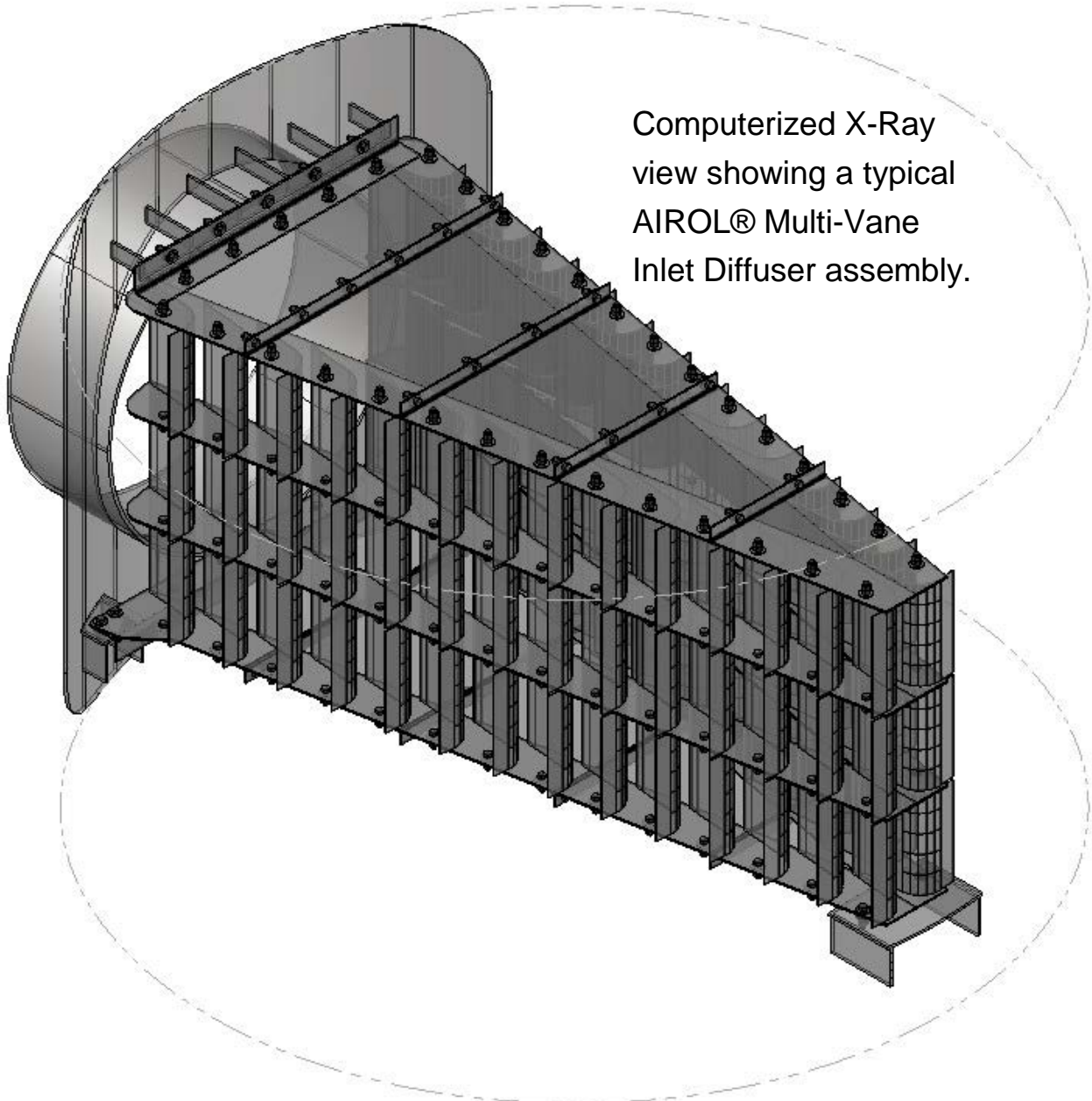


AIROL® MULTI-VANE INLET DIFFUSER



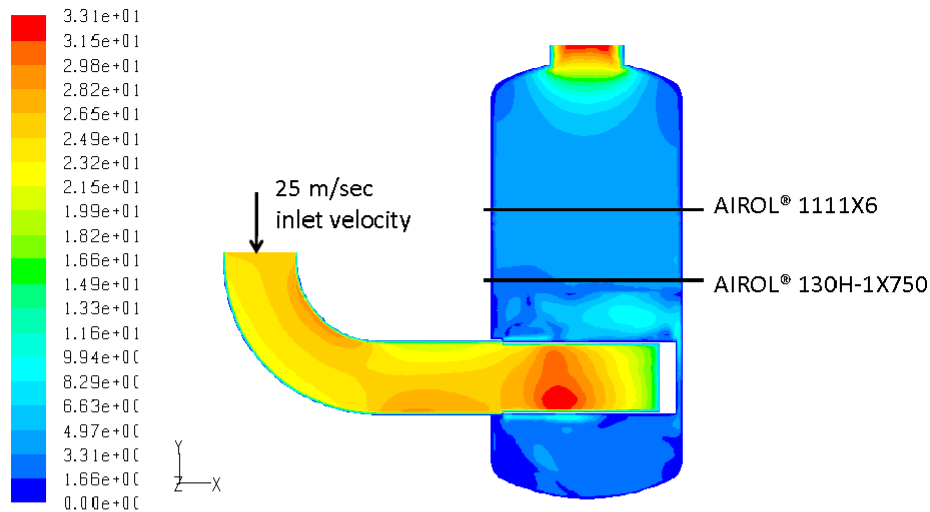
Computerized X-Ray
view showing a typical
AIROL® Multi-Vane
Inlet Diffuser assembly.

Coastal's *AIROL® Multi-Vane Inlet Diffusers* reduce inlet gas velocity to help insure uniform gas distribution to vertical flow mist eliminators. The *AIROL® Multi-Vane Inlet Diffuser* also will pre-separate liquid before it reaches the mist eliminator.

Utilization of modular design and construction allows sections to pass through manways, which is beneficial for retrofit applications. The diffuser can be constructed from any alloy and provided with support brackets and beams.

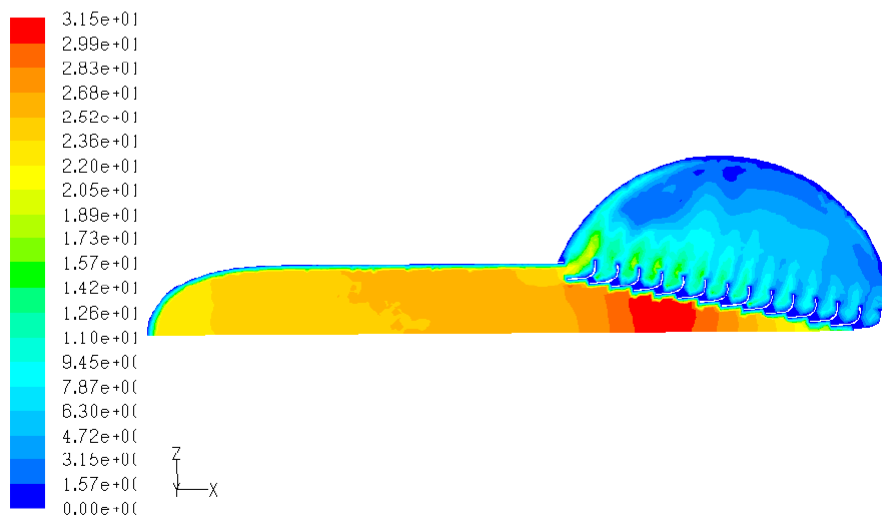
AIROL® Multi-Vane Inlet Diffuser

Velocities Along Vertical Symmetry Plane



Contours of Velocity Magnitude (m/s)

Velocities Along Horizontal Plane Through Inlet

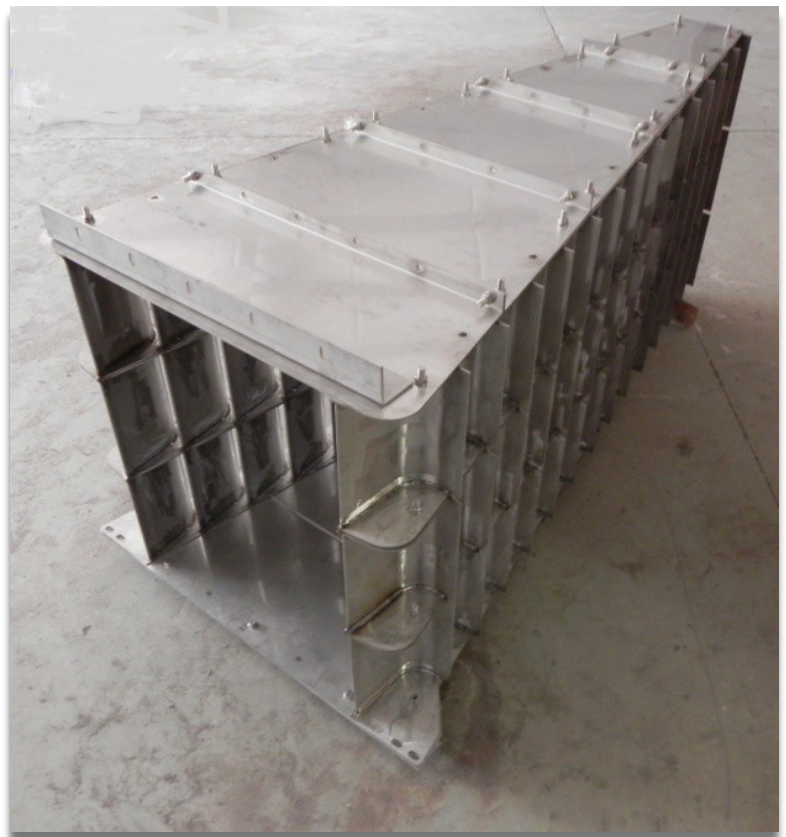
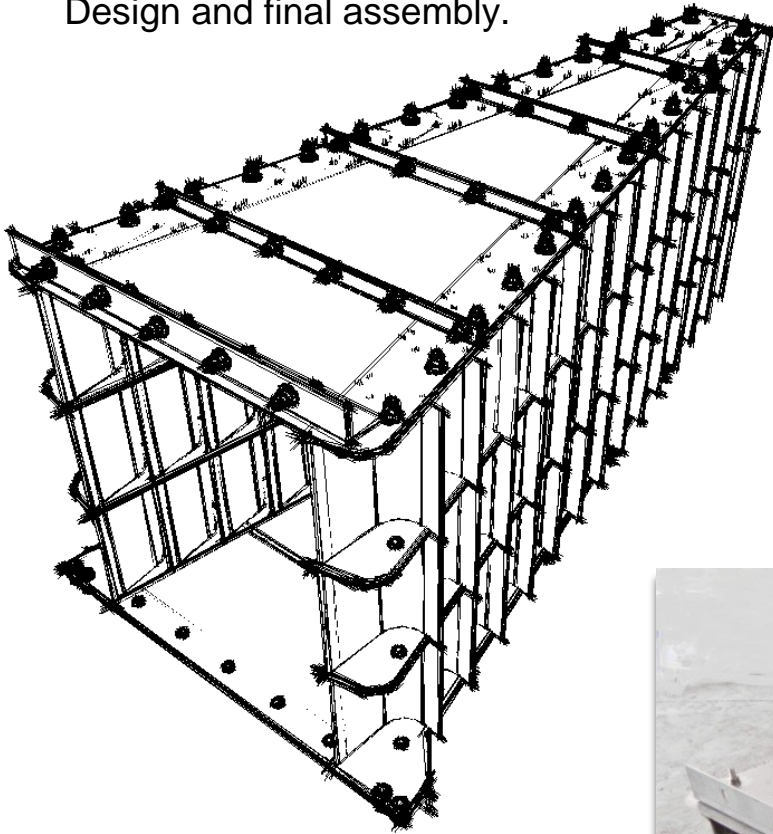


Contours of Velocity Magnitude (m/s)

Coastal utilizes computational flow dynamics to properly model the *AIROL® Multi-Vane Inlet Diffusers* to insure optimum performance.

AIROL® MULTI-VANE INLET DIFFUSER

Example of Conceptual
Design and final assembly.



AIROL® MULTI-VANE INLET DIFFUSER

Example of Conceptual Design
and final assembly.

